

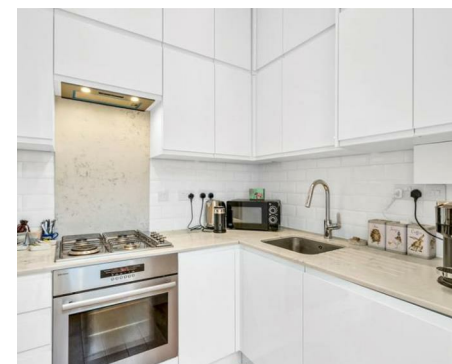
NEWINGTON
LONDON

2 Bedrooms

Apartment

Located in London

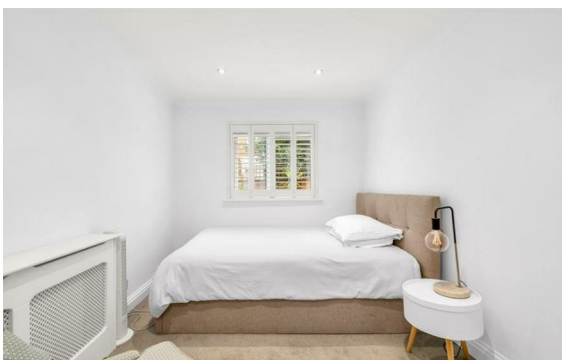
£955 Per Month



info@newingtonstates.com

<http://www.newingtonstates.com>

020 7724 2233



A beautifully presented two-bedroom apartment located in the period building and featuring all the benefits of leaving in central London. Comprising of two double bedrooms, one luxury bathroom, spacious reception with gorgeous fireplace and fully fitted kitchen with plenty of storage and separated dining area.

The property is located moments from Regent's Park, Marylebone Train Station (Bakerloo Line and National Rail) and Baker Street Station (Bakerloo Line, Jubilee Line, Metropolitan Line, Circle Line and Hammersmith & City Line).

EPC rating: C

Energy Efficiency Rating: C

Agents Note: Whilst every care has been taken to prepare these particulars, they are for guidance purposes only. All measurements are approximate and are for general guidance purposes only and whilst every care has been taken to ensure their accuracy, they should not be relied upon and potential buyers/tenants are advised to recheck the measurements.

NEWINGTON LONDON

60 Upper Montagu Street

London

W1H 1SN

020 7724 2233

info@newingtonstates.com

<http://www.newingtonstates.com>